

Discover the Oakland Value



Values that grow!

*If you haven't been to Oakland Nursery,
you simply haven't been to a nursery!*

**Check
the yellow
starbursts
for valued
savings!**



Why buy junk?



Save in the long run with quality plants from Oakland Nursery.

COMPARE OUR QUALITY AND PRICES WITH ANYONE!

Save this flyer for valuable information and savings!

Prices valid through June 5, 2016

FOUR CONVENIENT LOCATIONS TO SERVE YOU

Columbus:
1156 Oakland Park Ave.
614-268-3511

Delaware:
25 Kilbourne Rd.
740-369-5454

Dublin:
4261 W. Dublin-Granville Rd.
614-874-2400

New Albany:
5211 Johnstown Rd.
614-917-1020



OAKLAND NURSERIES

Add COLOR To Your Landscape With These Shrub Specials!

Oakland Nursery Is the Central Ohio Rose Headquarters!

For Superior Quality • For Real Value • For Great Savings

Oakland Nursery Features the **Largest Selection** of Roses in Central Ohio!



Knockout Rose Specials

Your choice: select from Knock Out, Double Knock Out, Sunny, or Pink Knockout

#1 Container
\$9⁹⁹ ea.

Knockout family of roses

A garden that stands out starts with a Knockout®



Value Price
\$24⁹⁹
#3 Container Hand Potted



Drift® Rose Special!

#1 Container
\$12⁹⁹ ea.

Thousands of other premium hand potted, #1 grade roses



starting from
\$19⁹⁹ ea.



Go to oaklandnursery.com for detailed descriptions



Mountain Fire Pieris Japonica
The new foliage is reddish with white blooms during the spring. reg.\$29.99 #2



Dwarf Korean Lilac
Fragrant lavender flowers in late spring. Compact, dwarf plant that typically grows to a height of 4-5 ft. #2



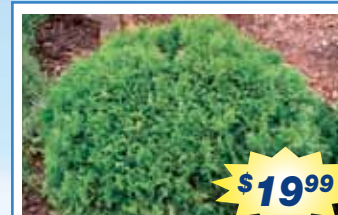
Crimson Pygmy Barberry
Deep reddish-purple foliage. #2



Pussy Willow
Perfect for tough growing areas. Great plant choice for cut branches and indoor decorating. #5



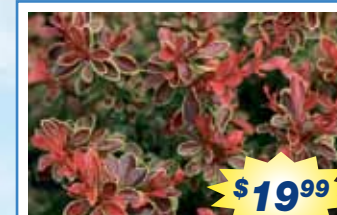
Gold Mop Falsecypress
Mound shaped evergreen shrub with soft bright yellow foliage. Provides year round color. #2



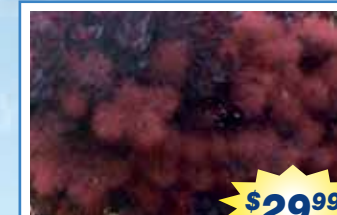
Danica Arborvitae
Globe shaped shrub that is an excellent choice for borders, foundation plantings, specimen or low hedge. It reaches 1 to 1.5 feet high when mature. #2



Blue Star Juniper
Slow growing, low rounded habit. Blue color adds nice contrast to landscape. #1



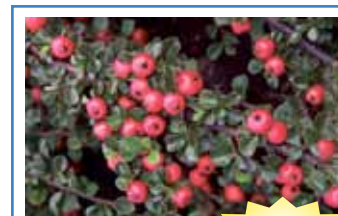
Admiration Barberry
A very compact mound shrub with bright red foliage edged in yellow turning to fiery red in the fall. Reaches 24 inches in height. #2



Royal Purple Smokebush
An upright multi-stemmed shrub with deep maroon foliage during the summer. The flowers produce a fuzzy smoky appearance throughout the summer, hence the name. Reaches 10 feet in height. #5



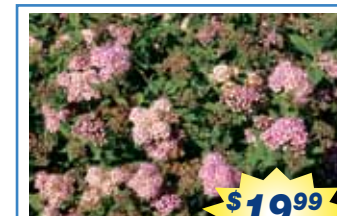
Coral Beauty Cotoneaster
Low spreading groundcover plant. White flowers in the spring and showy pink fruit in the fall. Reaches 12 inches in height with up to a 5 feet spread. #3



Cranberry Cotoneaster
Medium sized groundcover that reaches 3 feet in height and a 5 feet spread. Pink flowers in spring followed by red fruit in fall. #3



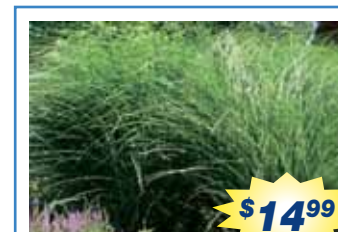
Purpleleaf Sandcherry
Reddish-purple foliage is a standout all season with small elegant pink flowers in spring. Reaches 7 feet when mature. Needs full sun and well-drained soil. #5



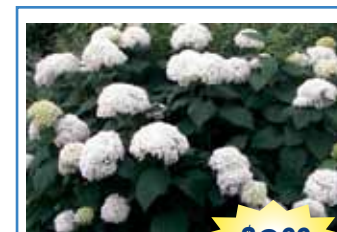
Spirea
Durable, spring flowering shrub with attractive foliage. Your choice of Goldmound, Little Princess, or Magic Carpet varieties. #3



Hameln Dwarf Fountain Grass
Ornamental grass suitable for smaller areas. Bright foliage turns to a golden tan in fall. Blooms are large white bottlebrush like plumes persist until winter. #2



Maiden Grass
Ornamental grass with fine green foliage that is attractive from summer through winter. Reaches 4 feet when mature. #2



Annabelle Hydrangea
A hardy, showy shrub which features ball-shaped white flower heads in mid-summer lasting for a long time. #1

We carry a wide variety of Mulches

- Hardwood
- Cypress
- Pine bark
- Pine Nuggets
- Pine Bark Mini Nuggets
- Red Mulch
- Black Mulch

Everyday Low Price!
Oakland's Premium Hardwood Mulch (2 cu. ft. bag)
\$2⁹⁹

Special - valid only April 1st-April 30th
Forever Black Mulch
2 cu. ft., reg. \$3.99
SALE \$1.99/bag (limit 52 bags, no deliveries)
50% OFF!

Finally...A kid & pet friendly lawn program.

ORGANIC
A natural in the garden since 1929.

Get a Dose of Nature No Measure. No Mess. Liquid Plant Foods

www.espoma.com

OAKLAND NURSERIES

Discover Oakland's Values



Assorted Rhododendron Varieties (specially marked)

Unbelievable? Yes, believe it!

Enjoy the selection and incredible prices!



Sale \$29⁹⁹ ea.
#3 reg. \$39.99

Sale \$9⁹⁹ ea.
#1 reg. \$19.99

Azaleas (All specially marked)



Sale \$4⁹⁹ ea.
#1 reg. \$9.99

Sale \$16⁹⁹ ea.
#2 reg. \$29.99

Late Spring Arrivals!!! (Arriving approximately the end of April)



Butterfly Bush #1 \$9⁹⁹ ea.

Rose of Sharon #1 \$9⁹⁹ ea.

Start Small, But With Quality #1 Landscape Sized Shrubs

\$4⁹⁹ each Every Day Low Price!

Arborvitae, boxwood, barberry, dwarf lilac, holly, hydrangea, junipers, mugo pine, spireas, taxus yew, weigela, and more!



(Subject to weekly availability)

Emerald Green Arborvitae

The Cadillac of upright arborvitae. 3-4 ft. Reg. \$29.99

Special Value! \$19⁹⁹

Save \$10



Hardy Grown Boxwood Special - Save \$5

#2 Reg. \$24.99 each **Sale \$19⁹⁹ each**



Pansies.....

An excellent flower for the cooler temperatures of early spring! Enjoy early spring colors!

from **99¢** 3-1/2" pot

Perennials

Gardening is a work of art, let perennials be your palette. Enhance your canvas with a selection of perennials with vibrant colors, heights, shapes and fragrances. 3" pot

from **\$2⁹⁹ each**

Select Perennials

#1 container Reg. \$7.99-\$10.99

Sale \$6⁹⁹ ea.

While Supplies Last!

- Becky Shasta Daisy
- Magnus Coneflower
- Walker's Low Catmint
- Russian Sage
- And many more!



#2 Starting from **\$14⁹⁹**

Ornamental Grasses Give your garden four seasons of interest with low-maintenance ornamental grasses. Oakland carries a very large selection.



#1 Landscape Size **\$5⁹⁹**

Creeping Phlox Enjoy early spring "carpets" of color. While supplies last.

Japanese Maples

Ohio's largest selection!

From **\$19⁹⁹** to \$5,000

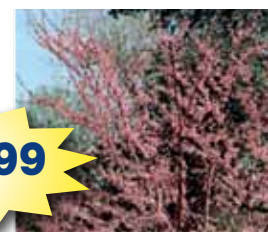
Select from cutleaf or upright varieties which include: Crimson Queen, Tamukeyama, Garnet, Orangeola, Red Dragon, Viridis, Bloodgood, Emperor One, Seiryu, Burgundy Flame, Fireglow, and more.



Red Bud

Container Grown 5-6 ft

\$19⁹⁹



Rising Sun Red Bud

Fuchsia flowers in early spring. Beautiful summer foliage varies between gold, peach, red and light green tones. Great tree for small landscapes. Can reach 12 feet when mature. #15, 5-6 ft **\$149.00**



Your Choice!

- Red Buds
- Tulip Tree
- Oak
- Dogwood
- River Birch
- Flowering Pear
- Maple
- Black Gum
- Flowering Cherry
- Jane Magnolia

Potted Tree SPECIAL Select #2 & #3 Sizes Reg. \$29.99 **\$19⁹⁹**



Unbelievable! Shade Trees

Visit Oakland and discover the best tree selection in Central Ohio!

- Select superior shade trees ranging in size from #2 size container up to a 4" diameter trunk!
- Our selection is unmatched & truly unbelievable!
- All of our trees are quality and guaranteed.

Evergreens!

- Norway Spruce #5 \$29⁹⁹**
- Canadian Hemlock #5 \$39⁹⁹**
- White Pine Long soft needles. 5 ft. \$99⁰⁰**
- Colorado Blue Spruce b & b. 6 ft. \$149⁰⁰ Special Value**



Larger evergreen sizes available

All trees & shrubs guaranteed for one full year!

Flowering Pear Tree Special

Cleveland Select Ornamental Pear -

A columnar accent tree with attractive white flower in spring. Outstanding deep purple foliage in the fall. Reaches up to 40 feet in height. #15, reg. \$149.00

SALE \$99.00!

A savings of 33% OFF!

Chanticleer Ornamental Pear -

Stunning white flowers appear in mid spring before foliage. Foliage is dark green and turns to deep purple in the fall. Reaches 40 feet when mature. #15, reg. \$149.00

SALE \$99.00!

A savings of 33% OFF!



Endless Plant Specials

- Emerald Green Arborvitae -** The Cadillac of upright arborvitae. #7 5-6 ft. **\$49.99**
- Snow Queen Oakleaf Hydrangea -** 24-30" b & b **\$39.99**
- Mountain Laurel....** from **\$29.99**
- Flowering Dogwoods** #2 **\$19.99**
5-6' b & b **\$99.00**
2 1/2" - 3" (jumbo size)..... **\$299.00**
- Hardy Bamboo**starting from **\$19.99**
- Burning Bush, #3** **\$29.99**
- Graham Blandy Boxwood** An upright boxwood variety, #2 **\$24.99**
- Alberta Spruce** #5, 3 ft. **\$39.99**
- Peony, #3** With plant support ring. 4 colors available **\$19.99**

Central Ohio's largest selection of unusual plants



Select from False Cypress, Weeping Norway Spruce, Dwarf Norway Spruce, Dwarf Serbian Spruce, Weeping White Pine, Dwarf Scotch Pine, Weeping Hemlock, Hardy Bamboo, and so much more!

OAKLAND NURSERIES

Oakland's SPECIALTY SHOPS!



Herbs! The Dozen Sale

Purchase one dozen or more herbs and

SAVE 50¢ per pot

\$2.49 per 3-inch pot
(reg. \$2.99 ea.)



Special values!



like getting 2 FREE plants!

Mouth-Watering Strawberries

18 bare roots potted 12 bare roots potted

\$9.99 **\$6.99**

Select from June-bearing and everbearing varieties



Other sizes available
\$19.99 FLAT
(flats consist of 18 single packs)

Fruit Trees



Many varieties in stock from which to pick!

#2 & #3 from **\$19.99** ea.

#7 from **\$39.99** ea.
(\$49.99 Value)



It's time to start a Vegetable Garden! Gardening Special

Vegetable Plants

\$1.99 /pack

Single potted vegetables also available
Save money & enjoy fresh produce from your backyard!



Onion Sets Available

Seed Potatoes, Bulk & Packaged Garden Seeds

Berry & Vegetable Plants

- Asparagus Roots, 3 roots **potted** from \$3.99
- Rhubarb Crowns, 1 **potted** \$12.99
- Grapes, #1 size \$14.99
- Blueberry, #1 size from \$9.99
- Red Currant, 1 plant **potted** \$9.99
- Black Currant, 1 plant **potted** \$9.99
- Gooseberries, 1 plant **potted** \$9.99
- Red Raspberries, 1 plant **potted** from \$7.99
- Black Raspberries, 1 plant **potted** \$7.99
- Assorted Hop Varieties, **potted** \$9.99
- Goji berry, **potted** \$7.99



A lush, green lawn, guaranteed with Oakland's 4-Application LAWN PROGRAM!

Covers 5,000 sq. ft.

Special price is not valid with other sales or discounts.

Special **\$49.99**



- 1st Application. **Dimension® Crabgrass Preventer Plus Slow Release Fertilizer.** 30-0-4 fertilizer can be applied through the end of April.
- 2nd Application. **Weed & Feed With Trimec.** 25-0-3 fertilizer ratio. Apply when dandelions and other broadleaf weeds are growing.
- 3rd Application. **Insect Control.** Controls most lawn and garden insects during the summer.
- 4th Application. **Premium Lawn Fertilizer.** 30-0-10 fertilizer ratio. Apply early to mid fall.

Our Best "Do-It-Yourself" Lawn Program!

Summer Flowering Bulb SPECIALS

ELEPHANT EARS
from **\$1.99** each

JUMBO GLADIOLI
24¢ each
size 14-16

DAHLIAS
12 varieties to select from
\$1.99 each
size #1

- LIATRIS size 10-12 **34¢** each
- PIXIE OR STARGAZER LILIES size 14-16 **99¢** each
- BRODIAEA Queen Fabiola or Spicata Blue **34¢** each
- CALADIUMS size #1 **\$1.19** each
- CANNAS size 3-5 **\$1.49** each
- ANEMONES **34¢** each



Two unique shopping experiences for eclectic home décor & garden art!
Visit oaklandnursery.com and look under Specialty Shops.

Oakland's HOME Store

- Distinctive Home Accents •
- Unique and Vintage Furniture •
- Cozy and Comfortable •
- Stop by soon to visit our HOME •



Save The Date!
Saturday, June 4
Summer BBQ Party!
BBQ Food Demo, music,
hourly door prizes
33% off
HOME Store items!



Oakland Nursery HOME
4271 W. Dublin-Granville Road
(adjacent to Oakland Dublin Garden Center)
614-874-2400, ask for the home store

At OAKLAND INSIDE & OUT what's next is now!

The arrival of spring signals the return of color to the landscape as our outdoor living spaces take the spotlight once again.



Come celebrate with us at our

Spring Open House

the weekend of **April 9 & 10.**
One lucky customer who stops by the Open House that weekend will win a Kitras Art Glass Ball valued at \$100!



Oakland Nursery INSIDE & OUT
5211-B JOHNSTOWN ROAD
(adjacent to Oakland New Albany Garden Center)
614-573-8648

OAKLAND NURSERIES



Greenhouse Plants & Tropicals!

Make the interior of your home come alive with our lush tropical greenery. Select from cacti, orchids, bonsai trees, fern plants, palm trees, lush foliage specimens, starter plants, and seasonal blooming plants.



Central Ohio's largest selection of Garden and Home Accents!

- Hundreds of water fountains
- Wide array of statuary
- Endless decorative pottery
- Garden accents & home decor

Other Oakland Services:

Oakland Landscape Design

(residential & commercial)

614-268-3834

Oakland Irrigation & Night Lighting

614-268-3444

Oakland Interiorscapes & Streetscapes

(residential & commercial)

614-268-9466



"Serving Central Ohio Since 1940"

©Copyright Oakland Nursery 2016

All Advertised Items Are While Supplies Last!

Visit our website at: oaklandnursery.com

Columbus • 1156 Oakland Park Ave. • 614-268-3511

Delaware: • 25 Kilbourne Rd. • 740-548-6633

Dublin • 4261 W. Dublin-Granville Rd. • 614-874-2400

New Albany • 5211 Johnstown Road • 614-917-1020

Open 7 days a week

Prices valid through June 5, 2016

"32 Acres
of Gardening
Pleasure"



Oakland Gift Cards!

Now available online & for any amount!
An Oakland gift card is a perfect gift for birthdays, weddings, anniversaries, or Mother's Day. Visit one of our four locations or www.oaklandnursery.com to make your purchase today!



Visit our website
& enroll in
Oakland Nurseries'
Rewards Plus
Loyalty Program